



 **HAWKER**

ZeMaRail™

12V Blocs



OWNER'S MANUAL

**for Rolling Stock VRLA TPPL+Sn Monoblocs: 12ZeMa92,
12ZeMa122, 12ZeMa167, 12ZeMa170, and 12ZeMa190**



www.enersys.com

CONTENTS

Introduction	3	Service	17
About this Document	4	Service	17
General Information	4	Inspection	18
Terms and Abbreviations	4	Checking Charge and bloc Voltage	18
Reference Documents	5	Cleaning and Visual Inspection.....	19
Safety	5	Capacity Test.....	20
General Safety Information.....	5	Service Life of the Battery	20
Product Description	6	Replacement of the Battery.....	21
Intended Use	6	Repair and Refurbishing (Curative service)	21
Leaflet "Information for the safe handling of lead-acid batteries"	6	Decommissioning	24
Classification of Warnings.....	7	Decommissioning in the Vehicle.....	24
Rolling Stock Monoblocs.....	7	Preparation for Storage.....	24
Technical Data	7	Disassembling.....	24
Illustration and Parts of a Monobloc	9	Recycling and Disposal	25
Charge and Discharge Parameters.....	9	Recycling and Disposal	25
Operating Modes and Special Operating Modes	10	Recycling	25
Transport & Storage	10	Disposal	25
Receiving	10	Troubleshooting	26
Storage Conditions and Time	10	Appendix	27
Mounting	12		
Preparing for Installation.....	12		
Installation Works.....	12		
Commissioning	13		
Commissioning	13		
Operation	14		
Operation.....	14		
Charging the Rolling Stock Battery	14		
Battery Operation	17		
Battery Operation.....	17		

INTRODUCTION



ZeMaRail™

12V Blocs

The information contained in this document is critical for safe handling and proper use of the 12V ZeMaRail™ blocs. It contains a global system specification as well as related safety measures, codes of behavior, a guideline for commissioning and recommended maintenance. This document must be retained and available for users working with and responsible for the battery. All users are responsible for ensuring that all applications of the system are appropriate and safe, based on conditions anticipated or encountered during operation.

This owner's manual contains important safety instructions. Read and understand the sections on safety and operation of the battery before operating the battery and the equipment into which it is installed.

It is the owner's responsibility to ensure the use of the documentation and any activities related thereto, and to follow all legal requirements applicable to themselves and the applications in the respective countries.

This owner's manual is not intended to substitute for any training on handling and operating the 12V ZeMaRail™ blocs that may be required by local laws and/or industry standards. Proper instruction and training of all users must be ensured prior to any contact with the battery system.

For service, contact your sales representative or call:

EnerSys EMEA

EH Europe GmbH
Baarerstrasse 18
6300 Zug, Switzerland
Tel: +41 44 215 74 10

EnerSys World Headquarters

2366 Bernville Road
Reading, PA 19605, USA
Tel: +1-610-208-1991
+1-800-538-3627

EnerSys APAC

No. 85, Tuas Avenue 1
Singapore 639518
+65 6558 7333

www.enersys.com

Your Safety and the Safety of others is Very Important

⚠ WARNING You can be killed or seriously injured if you don't follow these instructions.

ABOUT THIS DOCUMENT

General Information

This document provides instructions and technical information for the operation and service of rolling stock monobloc batteries in Railway applications. It covers the product range of 12V ZeMaRail™ monoblocs with VRLA (AGM), TPPL+Sn Technology:

- 12ZeMa92
- 12ZeMa122
- 12ZeMa167
- 12ZeMa170
- 12ZeMa190

Before you start operating or working on the battery, carefully read this Owner's Manual for 12V ZeMaRail™ Blocs.

Additionally, you must study the technical documents about your battery system and your application.

Paying close attention to these instructions will avoid possible hazards that batteries can cause, will reduce future repair or downtime, and help increase the service life of the battery.

Ignoring the operating instructions and repairing using non-original parts will render the warranty void. All failures, malfunctions, or defaults of the battery, the charger, or any other accessories, must be reported to EnerSys Service immediately.

Terms and Abbreviations

Term/Abbreviation	Explanation/Description
AGM	Absorbent Glass Mat
PbSn	Lead Tin (Alloy)
BMS	Battery Monitoring System
DoD	Depth of Discharge
NTC	Negative Temperature Coefficient
OCV	Open Circuit Voltage
PDAC	Product Development & Application Center
TPPL	Thin Plate Pure Lead (EnerSys Technology)
TPPL+Sn	Thin Plate Pure Lead with tin (EnerSys Technology)
SoC	State of Charge
Vpc	Volt per cell
VRLA	Valve Regulated Lead Acid (battery)
ZeMa	Zero Maintenance

Reference Documents

- EN 62485-2: Safety requirements for secondary batteries and battery installations (European Standard)
EN 62485-3: Part 2: Stationary batteries
Part 3: Traction batteries
- EN 60077-1: «Railway applications - Electrical equipment for rolling stock»
Part 1: General service conditions and general rules
- EN 50547: «Railway applications – Batteries for auxiliary power supply systems»
- EN 45545-2: Railway applications. Fire protection on railway vehicles - Requirements for fire behaviour of materials and components
- Leaflet Instructions for the Safe Handling of Rail Lead-Acid Batteries (EnerSys, Dec_2016)

General Safety Information

Operation manual, nameplate, warning signs, etc. must always be kept at the plant site and if possible, made visible in the battery compartment.

In principle, the internal instructions of the railway companies shall apply.



Follow instructions

Operation manual must be handed over to the competent personnel. A copy shall be available at the **charging location**.
Work on batteries only after instructed by qualified personnel.



First aid

If any acid splashes into eyes or onto skin **rinse under clear running water**. After contact with eyes, seek immediate advice from a **medical doctor**. Please also contact your doctor after serious skin contact.
If electrolyte splashes reach the eyes,
Clothing contaminated by acid should be washed with water and soap.



Pay attention to the hazards that can be caused by batteries.

Pay attention to the dangers posed by batteries like **stored energy, short circuit, DC current, explosive gases, and electrolyte leakage**.



Dangerous electrical voltage!

All **exposed metal parts** of the battery blocs are permanently live. Danger of injury by electric shock.
Touch the battery only on the plastic surfaces.



Electrolyte is highly corrosive!

If electrolyte splashes reach the eyes, immediately wash the eyes with **plenty of clean water**. In case of an accident consult a doctor immediately!
In normal operation, contact with the electrolyte is excluded. At the destruction of the cell vessels, the released fixed electrolyte (gelled sulphuric acid) is as corrosive as liquid.

SAFETY

Safety (cont.)



Avoid the risk of explosion and fire hazard, short circuits!

Attention! Metal parts of the battery cells are always hot. **No tools or foreign objects are to be placed on the battery.**

Under all operating conditions, hydrogen can escape through the ventilation cap. Ventilate rooms and cabinets sufficiently.

The installation in non-vented sealed housing is **not permitted**.

To eliminate security risks, the **ventilation requirements of EN 62485-2**, Safety requirements for secondary batteries and battery installations. Stationary batteries must be respected.



Wear protective glasses and clothes!

Use protective glasses and clothes when working on batteries. Pay attention to the accident prevention rules as well as DIN EN 62485-3 and VDE 0105 Part 1.



No Smoking!

Do not expose batteries to naked flames, glowing embers, or sparks, as it may cause the battery to explode.

Intended use

The 12V ZeMaRail™ monoblocs are intended for use as a backup battery in rolling stock vehicles like coaches and multiple power units.

Improper use can result in danger to people and objects. Assembly, operation, and service of the batteries must be performed by qualified personnel.

Leaflet “Instructions for the Safe Handling of Rail Lead-Acid Batteries”

For more information on the safe handling of lead-acid batteries, please read the current EnerSys Information Leaflet “Instructions for the

Safe Handling of Rail Lead-Acid Batteries”. This guidance note provides advice and assistance for compliance with the statutory requirements.

PRODUCT DESCRIPTION

Classification of Warnings

Always observe the warnings under “General Safety Information” when handling the battery. This will reduce the risk of personal injury and the risk of property damage or damage to the environment.

More warnings in this operation manual indicate hazards as well as do’s and don’ts that have to be observed and followed in the corresponding modes of operation or during the work described.

Structure of Safety Instructions:

Icon	Warning (=Icon name) Warning text Notes	Bold Tags in bold Standard format
------	--	--

Rolling Stock Monoblocs

These instructions are valid for the following VLRA AGM monoblocs:

- 12ZeMa92
- 12ZeMa122
- 12ZeMa167
- 12ZeMa170
- 12ZeMa190

Technical Data

For 12V ZeMaRail™ monoblocs

Technology	: VRLA (AGM), TPPL+Sn
Nominal Voltage	: 12 V
Material of case/ cover	: PC+ABS FR, halogen free
Fire behaviour tested (according to)	: R7 (EN 45545-2) Approval is subject to functional necessity (clause 4.7)
Shock and Vibration	: Category 1, Class B (EN 61373)

Monoblocs are delivered charged and ready for use.

Rolling Stock Monobloc **12ZeMa92**

Rated Capacity	: 92 Ah C ₁₀ or 85 Ah C ₅
Part Number	: 1538-5066
Dimensions (WxDxH)	: 105 x 395 x 264 mm
Terminals	: M8 x 13 deep, female thread
Weight	: 28 kg

For more technical data take reference to the data sheet: EMEA ZeMaRail™ 12ZeMa92 Technical Data

PRODUCT DESCRIPTION

Technical Data (cont.)

Rolling Stock Monobloc **12ZeMa122**

Rated Capacity	: 122 Ah C ₁₀ or 121 Ah C ₅
Part Number	: 1568-5093
Dimensions (WxDxH)	: 173 x 338 x 273 mm
Terminals	: M6 x 14 deep, female thread
Weight	: 43.2 kg

For more technical data take reference to the data sheet:
EMEA ZeMaRail™ 12ZeMa122 Technical Data

Rolling Stock Monobloc **12ZeMa167**

Rated Capacity	: 167 Ah C ₁₀ or 165 Ah C ₅
Part Number	: 0740-7800C0K6
Dimensions (WxDxH)	: 429 x 172.5 x 273 mm
Terminals	: M6 x 13 deep, female thread
Weight	: 53.1 kg

For more technical data take reference to the data sheet:
EMEA ZeMaRail™ 12ZeMa167 Technical Data

Rolling Stock Monobloc **12ZeMa170**

Rated Capacity	: 170 Ah C ₁₀ or 167 Ah C ₅
Part Number	: 1538-5067
Dimensions (WxDxH)	: 125 x 561 x 283 mm
Terminals	: M8 x 13 deep, female thread
Weight	: 52.5 kg

For more technical data take reference to the data sheet:
EMEA ZeMaRail™ 12ZeMa170 Technical Data

Rolling Stock Monobloc **12ZeMa190**

Rated Capacity	: 190 Ah C ₁₀ or 187 Ah C ₅
Part Number	: 1538-5068
Dimensions (WxDxH)	: 125 x 561 x 317 mm
Terminals	: M8 x 13 deep, female thread
Weight	: 60 kg

For more technical data take reference to the data sheet:
EMEA ZeMaRail™ 12ZeMa190 Technical Data

PRODUCT DESCRIPTION

Illustration and Parts of a Monobloc

Ref	Subject	Qty	Material
1	Bloc lid light grey	1	PC+ABS FR
2	Bloc case light grey	1	
3	Flame barriers at vents	2	
4	Terminal protection lid	1	
5	Monobloc label	1	



Parts of a 12V ZeMaRail™ Monobloc

Charge and Discharge Parameters

12V ZeMaRail™ Monoblocs

U_N	: 12 V	Nominal voltage
C_{10}	: XX Ah	Rated capacity to 1.80 Vpc at 20°C until 10.8 V
I_{10}	: XX/10 A	Discharge current for C_{10}
I_{Load}	: acc. Load profile A	Discharge current acc. Customer load profile
U_{final}	: 10.8 V	End of charge voltage at I_{10} (until 1.8 Vpc)
$I_{Charge\ max}$: 0.45*XX A	Charge current for IU or IU0U-charging (minimum for cyclic use: 0.25*XXA)
U_{Boost}	: 14.4 V	Boost level voltage setting at 20°C (2.40 V)
U_{Rail}	: 13.8 V to 14.1 V \pm 1%	Lower level or constant voltage setting for rail applications at 20°C, 2.30 ... 2.35 Vpc (low ... high cyclic use)
I_{switch}	: 0.012*XX A	
U_{float}	: 13.74 V \pm 1%	Float level voltage at 20°C, 2.29 Vpc (> 24h)

Manual temperature compensation of the charge voltage:

-24mV/°C Electrolyte – temperature between -20°C till +45°C (-4 mV/per cell)

See technical datasheet of monobloc for specific parameter data

PRODUCT DESCRIPTION

Operating Modes and Special Operating Modes

Further information about these modes can also be found in "Operating Modes".

Standby (parallel) Operation (charge)

As long as the power supply is ensured via the main power supply, the backup battery is continuously charged. Then the charging current depends on the charging status of the battery. With continuous charging, the current drops to very small values to maintain the battery fully charged.

Battery Operation (discharge)

When the power supply is switched off or fails, the supply to DC loads will come from the battery. The backup time will depend on current demand from the DC loads.

To avoid a damaging deep discharge, the loads must be separated before reaching the final discharge voltage of the battery.

Storage and Workshop Operation (recharge, capacity testing, etc.)

During storage or service, the battery can be disconnected from charging and any loads, the battery will show its open-circuit voltage on its terminals.

The state of charge is also to be monitored during the storage of the battery. Possibly you might hold it at full charge by a workshop charger operating with float voltage.

Receiving

Upon receipt of a shipment, check that the items delivered are undamaged and match the carrier's Bill of Lading. Report any damage or shortages to the carrier. Your supplier is not responsible for shipment damage or shortages that the receiver does not report to the carrier.

Storage Conditions and Time

If a battery cannot be installed immediately it should be stored in a clean, cool, dry area.

The batteries must not be stacked. We recommend, for simple handling during transport and storage, to place the monoblocs on a pallet and fix them. Protect the battery from dust and contamination with a plastic cover.

The relative humidity of max. 90% RH (non-condensing) should not be exceeded.

The storage ambient temperature should be between -15°C and 30°C, details see the "Cleaning and Visual Inspection" section.

Do not expose the blocs and batteries permanently to direct sunlight.

TRANSPORT & STORAGE

Storage Conditions and Time (cont.)

Care must be taken on cleanliness. When cleaning, please note the remarks in the "Cleaning and Visual Inspection" section.

During storage, batteries lose capacity through self-discharge.

High temperature increases the rate of self-discharge and reduces the storage life.

The chart below shows the relationship between open-circuit voltages (OCV) and storage time at various temperatures, as shown in **Figure 1**.

The maximum storage times before a refresh charge is required and recommended open circuit voltage audit intervals are:

Temperature (°C)	Storage Time (months)	OCV Audit Interval (months)
+10	48	6
+15	34	6
+20	25	4
+25	17	4
+30	12	3
+35	8.5	2
+40	6	2

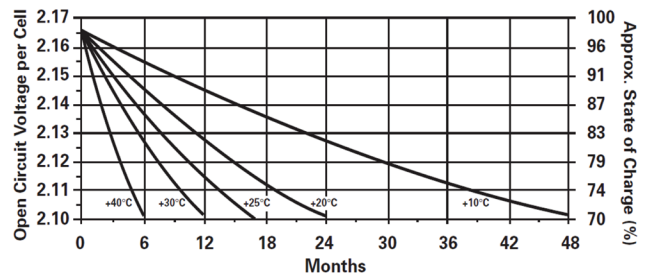


Figure 1: Self-discharge: OCV per cell representing approx. % of SoC.

12 ZeMaRail™ monoblocs must be given a refresh charge when bloc voltages approach 12.6 V (the equivalent of 2.10 volts per cell) or when the maximum storage time is reached, whichever occurs first.

If the voltage of the individual monoblocs is reduced below 12.12 V, storage damage may be present. Before using such batteries, they should be recharged and tested in the workshop.

MOUNTING

Preparing for Installation

The batteries are loaded and delivered ready for use. Before assembly, please conduct the following testing and preparation steps:

Check the flawless delivery and make sure that no damage is caused by transportation.

Check the open-circuit voltage OCV of the monoblocs.

A bloc voltage below 12.6V indicates a bad state of charge of the monoblocs. Make sure that the batteries are charged under constant load for 72h before (or just after) the installation.

A bloc voltage below 12.12V indicates irreversible damage during transport and storage, and a check or replacement of the affected unit is recommended.

For cleaning the batteries, please note the instructions under "Cleaning and Visual Inspection."

Installation Works

Take note of the contents of this manual prior to installation and record them for later consultations.

During mounting, follow the instructions below: The insertion of the battery tray is carried out in accordance with the instructions of the vehicle manufacturer and any internal instructions of the railway operator. The work must be performed by trained personnel.

Due to the heavy weight of lead-acid batteries, a suitable mechanical lifting truck or crane for handling must be used.

Do not use grease on the frame rails or the end terminals. If a protective grease is necessary for the connections, use **only** pure silicone grease (risk of damage to plastic cases).

Installation in non-ventilated sealed housing is not permitted. Verify during installation that the battery compartment of the train allows sufficient air exchange.

During installation (and later operation) of their moving stationary battery system it is essential to comply with the applicable regulations. In particular, we refer to:

- EN 62485-2: 2018
«Safety requirements for secondary batteries and battery installations»
- Local regulations for low voltage installation.

Open and secure the switch of the electrical installation to the battery box, so for the assembly the battery lines to the charging rectifier and the loads are fully isolated and the battery voltage is "floating".

Also, a battery disconnected from the charger, or the external circuit supplies **live electrical voltage**, and small quantities of hydrogen gas can escape. Prevent open flames, electrostatic discharges, sparks, and short circuits with clothing, jewelry, watches, and tools during the installation.

Verify that during operation, **sufficient air circulation will ensure the dissipation of heat** out of the compartment. Check that any ventilation filters are not blocked.

Installation Works (cont.)

Assembly Inspection, Connection

NOTE: Following points when installing:
Follow the “Commissioning” section as well as the instructions of the system supplier (battery box, auxiliary power supply).

Check the polarity of the battery and monoblocs. Monoblocs or batteries connected in series are connected from the negative to the positive pole of the following battery.

Connect the battery only after checking the correct battery polarity to the charger or the consumer load.

If they connect, there may be a small spark depending on the switching arrangement.

Verify that the batteries are properly secured in their position.

Commissioning

The commissioning of the entire system must be carried out as specified by the vehicle manufacturer and equipment suppliers (auxiliary power supply) as well as the internal guidelines of the train operator.

Make sure that the settings and parameters for the charge and monitoring correspond with the information in these operating and service instructions. Regarding charging, battery operation, inspection, and monitoring, these operating and service instructions must be followed.

Now close the circuit breaker to the battery box according to the instructions of the vehicle manufacturer and equipment suppliers.

Please check the charging voltage and verify that **during the constant voltage charge, the recommended voltage value can be measured at the end terminals of the battery.**

NOTE: This value depends on the given charge— and temperature conditions and during inspection the charge must be in the constant voltage phase. This depends on the state of charge of the batteries and will apply after 9 hours of charging.

After the inspection of the charge, perform a discharge with loads of the vehicle and check the **function of the deep discharge protection relay** when the final discharge voltage is reached. Register the average power consumption, the discharge duration, and the final discharge voltage (minimum voltage on the battery before the disconnection).

Check if the battery is free of loads after the shutdown. It is important to note that such loads can deeply discharge the battery. If there is no charge in due time, the load must be switched off manually. Fully recharge the battery immediately after the test and hold the battery for at least 48 hours on continuous charge.

OPERATION

Operation

Here you will find important information on the normal and safe operation of the backup batteries. Batteries have a limited service life and are consumed by the operation. Apply the information for the charging to achieve a long service life.

Operation Modes

The rolling stock battery as a backup battery is an important part of the auxiliary power supply of the coach or a multiple power unit. The battery is usually installed in standby operation and is therefore always connected to the electrical installation.

The battery has a strong influence on the voltage in the DC supply line. As long as the pantograph is lifted (power supply from the contact line is switched on) the power converter is working with the charging voltage. It supplies the loads with electricity and simultaneously charges the battery with a current according to the load parameters and their state of charge. If the pantograph is lowered, the battery acts as a power source (discharge) and provides the loads with energy.

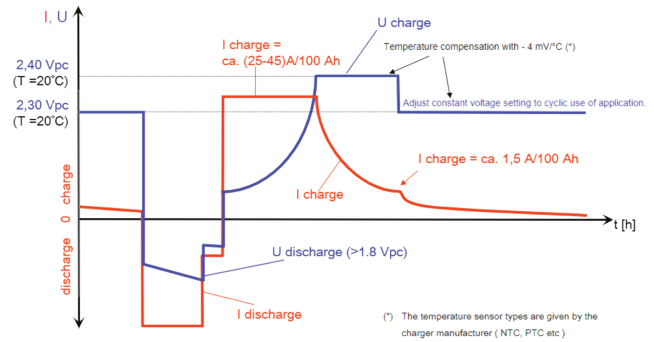


Figure 2: Operating modes charge-discharge-charge with IU0U charging characteristic.

This reduces the voltage on the DC bar with the depth of discharge of the battery. To avoid damage to the battery, over the discharge time, the load management will cut off parts of the load and the deep discharge protection will disconnect the load from the battery when the end of discharge voltage is reached.

Charging the Rolling Stock Battery

WARNING These batteries should be charged with the herein-described IU0U or IU charging method (according to DIN 41772 and DIN 41773-1). Otherwise, there is a risk of damage to your battery.

For operation in rolling stock vehicles, the battery should be charged following EN 50547 "Railway applications – Batteries for auxiliary power supply systems" and in accordance with **IU0U charging – characteristic** (DIN 41772) with temperature compensation (see "Temperature compensation of the charging voltage"). This complex charging technology, combined with temperature compensation, and state of charge depending on boost charge allows a fast recharge and a gentle continuous charge of the backup.

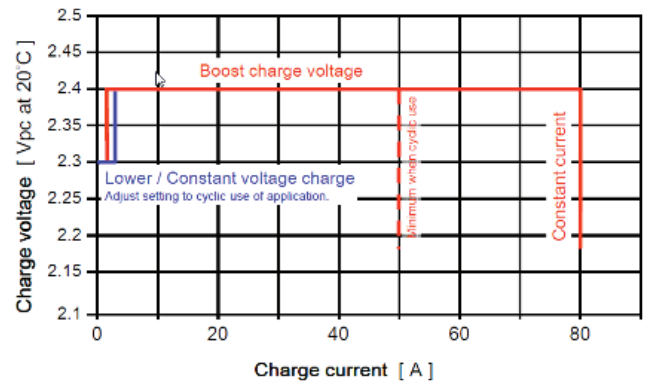


Figure 3: Charging characteristic IU0U charge for 12V ZeMa battery

OPERATION

Charging the Rolling Stock Battery (cont.)

For rolling stock batteries with 12V ZeMaRail™ monoblocs, the 2-level battery charging characteristics are recommended. The IU0U charge starts with a constant current phase, while the voltage increases as a function of the state of charge (SoC) of the battery. At about 80% SoC the battery reaches the voltage of the boost-charging

phase, and the charge current will reduce. At a SoC of about 95%, the current is so low that the charge control switches to the constant voltage charging. The battery will then get fully charged and a small charging current remains to compensate for the self-discharge and recombination. The reference temperature is 20°C.

Parameter 12ZeMa190* at 20°C	Cell 2V	Battery 24V	72V	108V
Max. charging current*	80 A			
Boost level voltage U_{Boost}	2.40 V	28.80 V	86.4 V	129.6 V
Lower-level voltage U_{Rail} (2.30V/pc)	2.30 V	27.6 V	82.8 V	124.2 V
Temperature compensation	-4 mV/°C	-48 mV/°C	-144 mV/°C	-216 mV/°C

*Charging current relates to monobloc capacity, for other monoblocs refer to data sheet

The switching between the charging voltages for boost level charging U_{Boost} and for (lower) constant voltage charging U_{Rail} is carried out according to the following criteria:

Downshift from U_{Boost} to U_{Rail} :	When charging current falls under 3A ($\pm 1A$)
Upshift from U_{Rail} to U_{Boost} :	If charging current increases over 5A ($\pm 1A$)

For temporal limitation of the boost charging, a maximum boost charging time of 12 hours must be implemented beside the charging current, as switching criteria. Charging interruptions shorter than 2 minutes should not restart this time.

When switching to (lower) constant voltage charging U_{Rail} the voltage should be reduced with a ramp, so that a charging current greater than 0A remains.

When the operating of your train loads the battery with daily discharges >5% DoD adjusts the lower charging voltage of your system.

Temperature Compensation of the Charging Voltage

The operating and ambient temperature affects the battery life. It is therefore recommended that the charger detects the battery temperature with a sensor and compensates the charging curve as specified in the "Technical Data" section.

⚠ WARNING If continuous charging voltage U_{Rail} operates without temperature compensation and the **ambient temperature of your battery installation should permanently be outside the range of 18°C to 25°C**, correct the charging voltage U_{Rail} according to the chart on the following page.

OPERATION

Charging the Rolling Stock Battery (cont.)

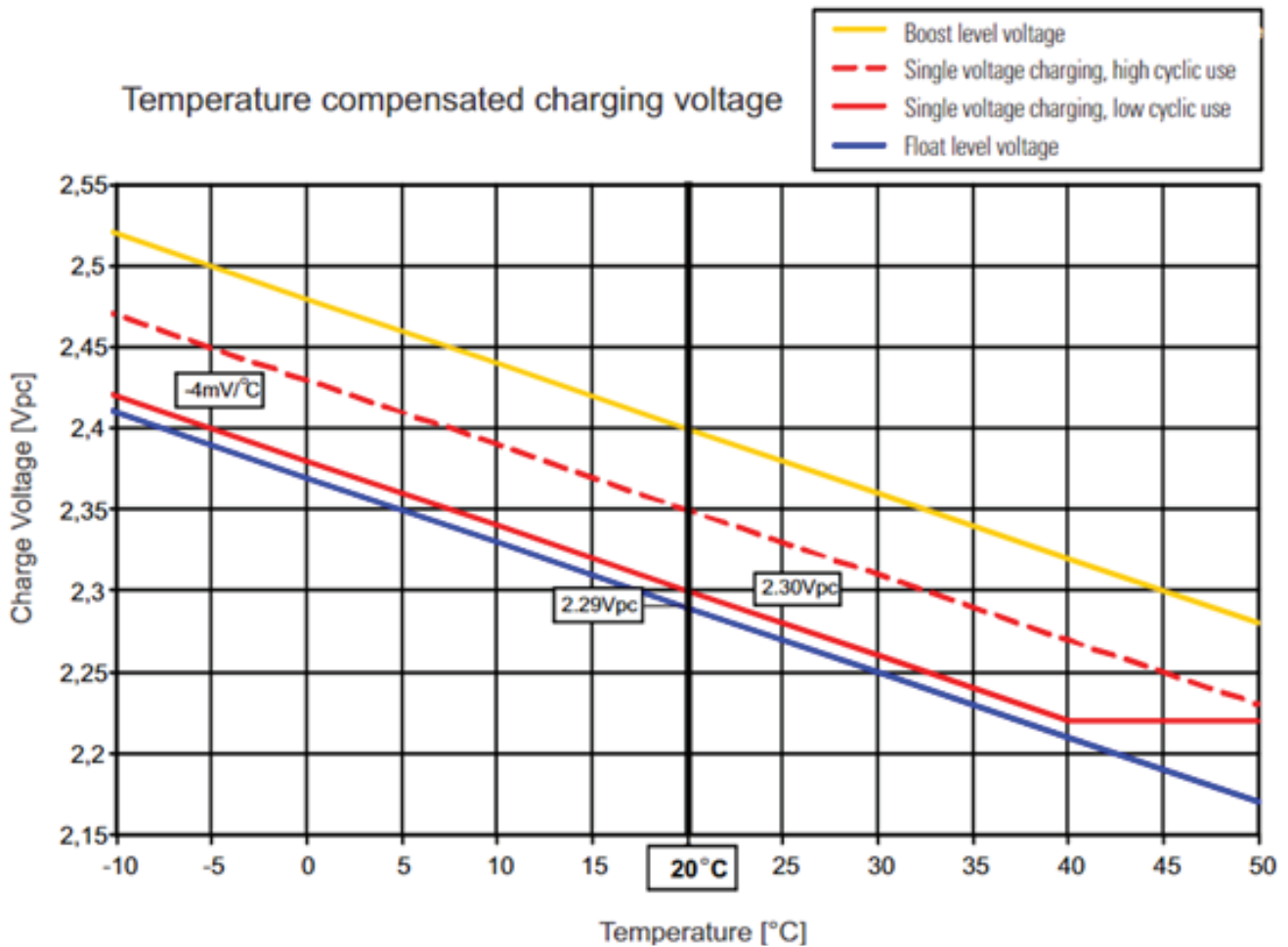


Figure 4: Temperature-compensated charging voltage

- Adjust the setting of the manual temperature compensation with a negative gradient of
- 4m V/°C/cell for the temperature range from -25°C to 40°C. This corresponds to
 - 48m V/°C for a 24V battery system.

The allowed tolerances $\pm 1\%$ for the respective constant voltage charging U_{Rail} remains.

- Example:
- A 24 V battery with low cyclic use (2.30 Vpc) and an average electrolyte temperature of 10 °C would be charged with 28.08 V.
- $12 \text{ cells} * 2.30 \text{ Vpc} + (-10^\circ\text{C} * -0,048 \text{ V}/^\circ\text{C}) = 28.08 \text{ V}$

⚠ WARNING Attention! Increased operating temperatures will lead to premature aging of accumulators.

Practical tests show that an increase of 10°C of the battery temperature from the nominal temperature of 20°C causes a 50% reduction in service life.

BATTERY OPERATION

Battery Operation

Backup batteries for rolling stock of the type 12ZeMaRail™ monobloc may only be discharged down to the specified **discharge voltage** U_{final} . For the values of your system refer to the System-specific Technical Data (see Position “ U_{final} ”).

⚠ WARNING After a discharge, **recharge the battery system immediately** in accordance with the regulations described in the previous section. Implicitly **avoid longer holding times without full charge**. This will prevent damaging your system.

In the **event of an interruption** (e.g. equipment failure), a discharge to 1.65 Vpc is allowed. Thereafter the battery must immediately be fully recharged and the total voltage must be checked. In case of repeated failure, we recommend maintaining in the workshop a preventive full charge of the battery according to the “Equalization Charge” section.



Risk of explosion!

During all operating conditions **hydrogen can escape** from the cell's valves.

Venting spaces and cabinets in which batteries are operated sufficiently well.

Avoid the risk of explosion by strictly following the ventilation rules of EN 62485-2: 2018, “Safety requirements for secondary batteries and battery installations.”

When the train is set out of service, a discharge (by consumer loads) must be avoided. Keep the batteries either on float charging or process them in accordance with the “Decommissioning in the Vehicle” section.

Service

The 12V ZeMaRail™ monoblocs for rolling stock batteries are designed with sealed maintenance-free cells (VRLA) filled with AGM fixed electrolytes. No water must be refilled into these cells.

⚠ ATTENTION It is prohibited to open the bloc housing to fill in water or other substances.

For a long-lasting hassle-free operation, it is important that the charging technology is correctly parameterised to the operating conditions. Make yourself familiar with the operating conditions and make sure you know and understand the charging technology being used. (Also note the information in the “Operation” section.)

Make sure that only qualified and protected personnel have access to the battery system and that they are familiar with the contents of these operating and service instructions, and in particular with the safe handling instructions of batteries as described in the “Safety” section. A battery is **always live**, even when it is disconnected from the charger or the external circuit. Pay attention during inspection and during repairs on live parts, and avoid open flames, static discharges, sparks, and short circuits with clothing, jewelry, watches, and tools. Ensure insulated tools are used.

Inspection

Periodically check and verify that the battery system is functioning correctly.

Preventive Maintenance Procedure	See Detail	Interval
Constant voltage of charging at the terminals of the battery	Checking charge and bloc voltage	At commissioning; thereafter every 4 to 12 months
Cleaning and visual inspection	Cleaning and visual inspection	Every 12 months

Checking Charge and Bloc Voltage

List of tools for this inspection action:

Designation	Comments
Digital voltmeter with thin measuring tips (Measuring hole connector cover 2mm)	DC voltage measurement with display precision 0.001 V at bloc voltage
DC-Clamp Meter	Cable diameter approx. 15mm for measured values <1A and <60 A
Temperature Meter	Possibly with an external sensor
Tool for accessing	According to documents of the corresponding battery box

⚠ WARNING Check and **adjust the constant charge voltage at least once per year** in accordance with the instructions of the charger manufacturer. At the same time, measure and record the individual bloc voltages.

The following measurements should be regularly carried out and recorded. Select the measurement interval corresponding to the functional importance

of the battery system (e.g. its relevance to the safety of persons). For applications with Battery Monitoring System (BMS), this function may be partly carried out automatically and a realization of these measurements is only necessary in case of an error message.

Check the setting of the voltage controller of the charger every 6 to 12 months. Integrate this test in the inspection modus at an appropriate interval.

Parameter	Measurement	Measuring Interval
Continuous charge voltage at end terminals of the battery*	$>U_{\text{Battery}}$	On start-up, then every 4 to 12 months
Continuous charging current*	$<3 \text{ A}$	After full charge, every 6 to 18 months
Bloc voltages*	$>2 \text{ V}$	At commissioning; thereafter every 6 to 18 months
Battery temperature	$^{\circ}\text{C}$	Once in the summer and upon request*

*Conduct your electrical measurements: if the charge is on the level of continuous charging/constant voltage phase, that means it should be measured after the charge was not interrupted for a period of 9 hours. Log the battery temperature for a better interpretation of your measured values.

Checking Charge and Bloc Voltage (cont.)

Verify the charging voltage of the charger and make sure that the constant charging voltage at the battery terminals corresponds with the recommended value. (Please note that in this case the value depends on the current charge and temperature conditions and that the constant charging voltage is already pending.)

In case of deviation adjust the charging scheme according to the instructions of the charger manufacturer.

Store the collected data related to the battery system and analyze them over the time of

operation. Significant deviations should be observed. For a structured approach please use the "Decision tree for analysis of voltage deviations" in Appendix A1.

When interpreting the measured values for the bloc voltages check that the correct charging voltage of the blocs is 20°C and under fully charged conditions is in a tolerance range of ± 0.3 V/per 12V bloc. Lower values require attention especially if they tend to continue to decay. This may indicate that there is an internal short circuit in one of the blocs. During the service life, expect higher bloc voltage values to decline.

Cleaning and Visual Inspection

List of tools for this service action:

Designation	Comments
Damp cloths	
Tool for accessing	According to documents of the corresponding battery box
The batteries must be kept clean and dry.	

WARNING Risk of sparking caused by static discharge!

Clean dirty surfaces of batteries and blocs with a water-dampened cloth. Other cleaning agents or other substances shall not be used. Lead-acid batteries should not be cleaned with a dry cloth or feather dusters.



Wear protective glasses and clothes!
Protect the eyes if you come near the battery; liquids and explosive gases can cause blindness and damage.

While **working on batteries** observe the accident prevention regulations, as well as EN 62485-2 and -3 and EN 50110-1.



Risk of case damage!

There is a risk of damage to plastic cases by **chemicals**.

Do not use any sprays, chemicals, solvents, or similar to clean the battery.

The system design for rail applications often uses fully insulated connectors. This helps avoid creepage from normal light pollution in the battery container. In the case of heavy soiling, use the battery switch to interrupt the charging of the battery. Then disconnect the battery pack with the battery connector and clean the surface with a water-dampened cloth.

Check the blocs, the connectors, and the tray for defective components: orientation and position of the components, material cracks, signs of overheating, extraordinary marks on valve covers, leaking electrolyte (gel), loose connectors, etc.

Should you clean a dismantled battery with a water jet, use a hose to pump out the water that has been collected in the tray. Take care that there is no water in the screw heads of the connectors and that the battery is thoroughly dry before re-commissioning.

Capacity Test

List of tools for this service action:

Designation	Comments
Charger and discharge resistor	With matching voltage, currents and connection to your system
Digital voltmeter with thin measuring tips (Measuring hole connector cover 2mm)	DC voltage measurement with display precision 0.001 V at bloc voltage
Tool for accessing	According to documents of the corresponding battery box

With a capacity test, you can verify the functionality of a battery system. A battery with standard design is operational if the current battery capacity C_{act} is greater than 80% of the rated capacity C_r (Testing according to IEC/EN 60689-21/22).

⚠ WARNING The most informative battery check is a periodic capacity test.

The test discharge is stressing the battery, and the voltage of individual cells must not fall below 1.6 Vpc.

Secure rapid full charge of the battery before and after the test.

Test the fully charged battery after a pause of 6 hours with a constant current C_{10} for 8h (test of functionality, less stressing) or down to the final voltage representing 1.8Vpc (test for actual capacity).

Service Life of the Battery

The 12V ZeMaRail™ monoblocs for rolling stock batteries have a limited service life. Cyclic operation consumes the active mass of the positive plates and continuous charge will lead to drying out of the electrolyte.

The end of the battery life is reached when the available capacity at fully charged conditions corresponds to only 80 % of the rated capacity. The reduced capacity is indicated by how quickly the voltage drops during battery operation (discharge). The Ah-meter of the battery management system BMS can determine the reduced capacity and will display the end of the service life.

The 12V ZeMaRail™ batteries must be operated at all times under the following conditions:

- Maximum energy throughput: Project related
- Average temperature: 20°C - 25°C
- Maximum operating temperature: up to + 40°C

In addition, the requirements, instructions, and documentation of the 12V ZeMaRail™ batteries must be complied with at all times.

The 12V ZeMaRail™ batteries work in the entire temperature range of EN 50125-1, Table 2, Class T3 (-25°C - + 45°C). At low temperatures, the charge consumption is reduced and the battery can no longer be fully charged. Constantly high temperatures accelerate the aging of the battery.

The time depends strongly on the real usage conditions (charging technology, influence of heat, cyclic operation, ...).

For the evaluation of the battery's state of health condition, a C_5 or C_{10} capacity test can be conducted. Due to the long duration of the test in most cases, the battery must be dismantled from the vehicle.

The increase in the continuous charging current is an indicator of the advanced period of use. But it is not a distinct sign of reaching the end of the service life.

We recommend that the rail operator define a maximum expected service life of the battery in their vehicles and operating conditions and preventively replace the rolling stock by this criterion.

Replacement of the Battery

In order to achieve a short downtime of the vehicle in the event of faults, which cannot be remedied within a short time or when the maximum period of use is reached, we recommend a rapid exchange of the battery system in the vehicle.

Dismantling the batteries

Follow the instructions in "Disassembling". Log the operation counter data, which is read at the BMS.

Installation of replacement batteries

Follow the instructions in "Mounting" and "Commissioning".

Reset the counters in the BMS (or to the intermediate values of the replacement battery).

Repair and Refurbishing (Curative service)



Avoid the risk of explosion and fire hazard, short circuits!

Attention! Metal parts of the battery cells are always hot; **no tools nor**

foreign objects are allowed to be placed on the battery.

Under all operating conditions, hydrogen can escape through the ventilation cap. Sufficiently ventilate rooms and cabinets.

It is not permitted to charge in closed and unventilated rooms.

To eliminate security risks, the ventilation

requirements for workshop charging according to EN 62485-3:2014 "Safety requirements for secondary batteries and battery installations, Part 3: Traction batteries" must be respected.

When working with a battery charger make sure you follow the instructions of this equipment and verify the correct parameter settings.

Recharging the battery in the workshop

For the recharging of the battery in the workshop at 20°C use a constant current charging of minimum I10 (12ZeMa190 =19A) and a trickle charging voltage of 2.29Vpc.

Charge with $*I_{10} = 20.8 \text{ A}$	Cell 2V	Monobloc 12V	Battery 24V
Constant voltage level = Trickle charging	2,29 V	13.7 V	27.5 V
Boost charge voltage (max. 10h)	2.40 V	14.4 V	28.8 V

*Charging current relates to monobloc capacity; for other monoblocs refer to data sheet

If you are using a modern IU0U-Charger, you can set the boost charge voltage to 2.40Vpc. Make sure the 1st phase is limited to 10 hours.

If the battery temperature in the workshop deviates permanently by more than 5°C, the charge voltage should be adjusted in accordance with "Temperature compensation of the charging voltage".

The recharging duration for a battery depends on

its discharge state (depth of discharge, discharge time). Recharging a completely discharged battery with the IU charging will take:

approx.	9 hours for	75% of the capacity
approx.	14 hours for	85% of the capacity
approx.	30 hours for	100% of the capacity

With a higher charging current and a boost charge phase, you can expect a shorter duration.

SERVICE

Repair and Refurbishing (Curative service) (cont.)

When the battery is fully charged with the recommended charge voltage, the continuous charging current is about 1mA/Ah. Over the service life of the battery, this trickle charging current can increase up to 6mA/Ah. The prolongation of the trickle charging for 48 to 72 hours will help to maintain the electrochemistry of your battery.

Equalisation charge

The 12V ZeMaRail™ monoblocs do not require periodic equalisation charging. In VRLA batteries stratification should not occur. After a deep discharge or when voltage differences of the blocs

indicate sulfation, an equalization charge can be considered.

This treatment is performed on the previously fully charged battery after a break of at least one hour (gassing, cooling down) and requires a special charging rectifier.

The procedure applies for a limited period of a small charging current (<10% I10) to the series-connected 12V monoblocs. During this charge with constant-current the voltage limit is increased to 2.8Vpc.

Equalisation Charge	Charging Current	Duration	12V Monobloc	24V System
12ZeMa92	max. 0.92 A			
12ZeMa122	max. 1.22 A			
12ZeMa167	max. 1.67 A	max. 10 h	16.8 V	33.6V
12ZeMa170	max. 1.7 A			
12ZeMa190	max. 1.9 A			

During this procedure, you must observe the battery for thermal reaction. If a battery cell exceeds the temperature of 45°C you must interrupt the equalisation charge.

Limit the duration of the equalisation charge to 10 hours. Long exposure to equalisation charge can damage the battery and consume a considerable share of its service life.

Recharging after deep discharge

Recharging after an accidental deep discharge may take too long in the vehicle and disrupt the daily service.

Recharge a completely discharged battery as soon as possible in the workshop at 20°C with a reduced current of I24 (12ZeMa190 = 8.8A) for 26 hours. Limit the charge voltage to 2.35 Vpc:

After this step adjust the charging rectifier back to a trickle charging voltage of 2.29Vpc. A subsequent recharging for at least 72 hours will help to maintain the electrochemistry of your battery.

Recharge current I ₂₄ = 9.8 A	Cell 2V	Monobloc 12V	Battery 24V
Voltage limitation, for 26h	2,35 V	14,1 V	28,2 V
Trickle charge, min. 72h	2,29 V	13,7 V	27,5 V

*Charging current relates to the monobloc capacity; for other monoblocs refer to the data sheets

After a correct recharge of the battery, it will then be ready for service. With a capacity test (see "Capacity test" section) you can verify the functionality. Note that each deep discharge stresses the battery and consumes its life endurance proportionately.

Mechanical damage caused by force (e.g. accidents)

Falling, a strong shock, or contact with aggressive chemicals can crack and compromise the case of the monoblocs, conducting electrolytes can escape and an internal short circuit can occur.



CAUTION Risk of short circuit!

All exposed metal parts of the battery blocs are hot. Danger of injury by electric shock or short circuit. Touch the battery only on the plastic surfaces. Do not place any foreign objects or tools on the battery.



Wear protective glasses and clothes!

Protect the eyes if you come near the battery; liquids and explosive gases can cause blindness and damage.

While working on batteries observe the accident prevention regulations, as well as EN 62485-2 and -3 and EN 50110-1.

If the damaged battery is connected to a circuit: Disconnect the battery with the installed electrical isolation device from the load circuit. (Battery switch; when de-energised: Emergency, connector battery connector, possibly bloc connectors).

Repair and Refurbishing (Curative service) (cont.)

In case of accidents, neutralise the leaking electrolyte with lime. The remains are to be disposed of in an environmentally friendly way and by no means can the material be poured into the waste.

Consult the leaflet "Instructions for the Safe Handling of Rail Batteries". For further questions contact our customer service!

If any acid splashes into the eyes or onto the skin, rinse under clear running water. After contact with eyes seek immediate advice from a medical doctor; please also contact your doctor after significant skin contact.

CAUTION Lead-acid batteries are **very heavy!** Pay attention to safe installation and use only suitable handling equipment and hoists.

Special care is required when the battery tray has cracks or mechanical damage.

Replacement of battery segment or individual blocs

Designation	Comments
Lifting and other mechanical tools	Depending on system design
Insulated torque wrench	Nuts according system design
Scotch-Brite sponge	Cleaning of contact surfaces

Assembly drawings and part lists can be found in the documentation of your system.

If your system is composed of several batteries

(e.g. in trays) or with individual monoblocs in series and you have to partially replace a segment or an individual bloc in the service workshop, please read the following information:

- Combine only batteries or blocs that are in the **same state of charge**. It is best to undergo the various groups a previous 72h charge with float level charging voltage and ensure that they all are fully charged.
- Combine only batteries or blocs with approximately the **same age** and when reusing blocs select blocs from similar applications. Our experience shows that new blocs prove problematic when installed with batteries that have already been used for more than 2 years.

Work with **insulated tools**, when assembling the blocs check the correct polarity and mount the connectors correctly (Refer to system drawing). During assembly, make sure that all contact surfaces are clean. Residues of the screw lock mass can be removed with a dry Scotch-Brite sponge.

Use only new and unused terminal screws with screw lock (grey-blue mass in the thread). Do not exceed the recommended **tightening torque** for the terminal screws:

Monoblocs	Tightening torque	Unit
12ZeMa92, 12ZeMa122,	9.0 ± 0.9	Nm
12ZeMa167, 12ZeMa170,	0.9	kpm
12ZeMa190	6.67	lbf ft

The terminal screws should be tightened quickly when screwing, otherwise, the screw lock cures, and an ordinary tightening is prevented.

DECOMMISSIONING

Decommissioning in the Vehicle

In the vehicle, the backup batteries will always be recharged to 100% SoC. Before a vehicle is removed from service, this charge should be completed.

Make sure that the charging equipment has adjusted itself to the continuous charging level and that the battery charge current has dropped to the low trickle charge current.

If you take the vehicle out of service, disconnect all loads from the battery. This avoids damaging deep discharge of the battery, and when recommissioning, a high capacity is still available. For decommissioning of the vehicle follow the instructions of the train manufacturer and the railway operating company. For "Recharging" follow the instructions given in the "Storage Conditions and Time" section.

Preparation for Storage

Should you store a working battery pack out of the vehicle, make sure that it is fully charged with a 48-hour charge in the workshop (see the "Recharging the battery in the workshop" section).

During storage, follow the instructions from the "Storage Conditions and Time" section.

Disassembling

Before disassembly, take note of the contents of this manual and follow the instructions below: Please follow the instructions of the vehicle manufacturer and any internal instructions of the railway operator when removing the battery pack from the vehicle. The work must be performed by trained personnel with appropriate safety equipment.

⚠ CAUTION Risk of short circuit!

All **exposed metal parts** of the battery blocs are hot. Danger of injury by electric shock or short circuit. Touch the battery only on the plastic surfaces. Do not place any foreign objects or tools on the battery.

Open and secure the circuit breaker of the electrical installation to the battery box, so that the dismantling cables are "floating" and isolated from the charging rectifier and the consumer loads.

Due to the high weight of lead-acid batteries, you must use a suitable mechanical lifting device.


Even at the end of the service life and disconnected from the charger or the external circuit, a battery is **live**. During disassembly, avoid open flames, electrostatic discharges, sparks, and short circuits with clothing, jewelry, watches, and tools. Use insulated tools.

Insulate and secure the connection cables of the vehicle during your work.

RECYCLING & DISPOSAL

Recycling and Disposal

Dismantle a battery keeping in mind the risks that are described above. Provided that the battery terminals are undamaged the battery will be protected against possible short circuits. Make sure that no tampering of the battery can be performed while the battery is stored or sent for recycling.

 <p>Pb Battery must be recycled</p>	<p>Environmental Risk! Risk of lead pollution. Back to the manufacturer! Batteries with this sign must be recycled. Batteries which are not returned for the recycling process must be disposed of as hazardous waste! When using motive power batteries and chargers, the operator must comply with the current standards, laws, rules, and regulations in force in the country of use!</p>
---	--

12V monobloc batteries are recyclable. Scrap batteries must be packaged and transported in accordance with prevailing transportation rules and regulations.

Pack them solid and attach the required Transportation Security Information. To simplify the collection and recycling or re-processing process, spent lead-acid batteries must not be mixed with other batteries.

Recycling

Material	Mass in %	Remarks
Case, AGM separator	~ 7	90% recyclable
Lead (Grid, active mass)	~ 64	100% recyclable
Sulphuric Acid	~ 29	100% recyclable

Disposal

Scrap batteries must be disposed of in accordance with local and national laws by a licensed or certified lead-acid battery recycler.

Please contact our point of sale to support you in taking back spent batteries and rendering them to the secondary lead smelters for processing.

Troubleshooting

Rolling stock batteries with 12V ZeMaRail™ monoblocs will operate very reliably if the charging conditions are correct and well-adjusted to the operation conditions in the train.

A failure of an individual cell or the battery usually leads to a reduced capacity of the total battery and appears to the operator in a reduced backup time in battery mode ("Battery Operation" section) :

- Load groups will switch off faster because the battery discharge voltage U_{final} is reached earlier or
- Too little capacity for lifting the pantograph or starting up the train. (The battery would respond to the higher power consumption with a voltage dip).
- A BMS could detect an unbalanced behaviour between individual battery parts if the discharge voltage of a single cell drops down too early.

To allow later analysis, we recommend in case of a failure to measure and record the individual cell voltages. We also recommend recording the conditions under which you made these measurements:

- Was the battery charging or discharge current or is the battery disconnected from the vehicle (if so, what was the duration?)
- Estimated state of charge of the battery
- Temperature of the battery. Pay attention to deviations of individual cells.
- Low voltages of individual cells during discharge can indicate an internal cell short-circuit or over-discharging.

Following such a failure, it is recommended to charge the batteries as soon as possible.

- According to your operating conditions decide whether this charge should be made in the vehicle or in the workshop. **In the vehicle**, avoid discharges by battery operation for one week by minimizing disconnection of the vehicle from the power line.
- More time intensive - but better and safer - is to charge the battery in the workshop ensuring a full charge over 72 hours according to the "Recharging the battery in the workshop" on page 21.

If you decide to dismount the battery, measure the open-circuit voltages of the cells before connecting to the charge.

After 24 hours the open circuit voltage is an indicator of the state of charge of a cell:

- Voltages above 12.84 Vpc are equivalent to 100% charge.
- Values less than 11.84 Vpc correspond to a residual charge of less than 20% or a discharge from over 80% of capacity (DoD >80%).
- If most of the cells are discharged to that depth, we recommend a charge in accordance with the "Recharging after deep discharge" section.
- For assessing the state of health of the monoblocs, measure after 3 days at the end of the battery charging according to the section "Recharging the Battery in the Workshop" the individual monobloc voltage during trickle charge. If the monobloc voltages are not within a window of ± 0.3 Volt, continue the charge and repeat the measurement after 10 completed days. Rate the cell voltages in accordance with Appendix A1, "Decision tree for analysis of voltage deviations."

To check the functionality and the battery capacity, perform a discharge in accordance with the section "Capacity Test"

If individual monoblocs show a fault and should be replaced, proceed according to the "Replacement of battery segment or individual blocs" section.

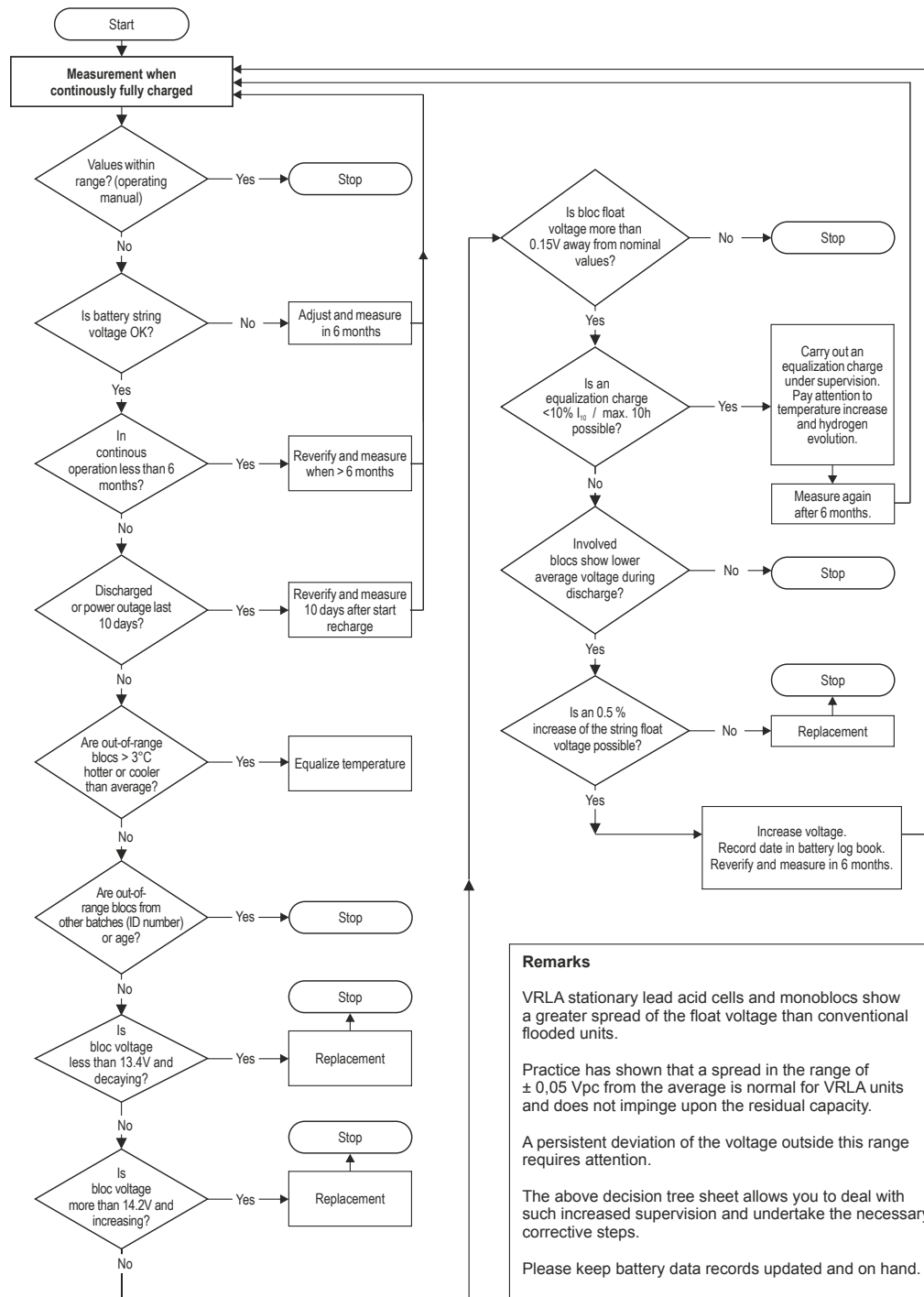
If you continue to operate the batteries in the train or when can't find any fault with the dismantled battery, check and verify the conditions of use and the proper functioning of the battery system. Refer to "Checking Charge and Bloc Voltage" section.

APPENDIX

Appendix A1

Decision tree for analysis of voltage deviations (12V ZeMaRail™ monoblocs under continuous charge)

Decision tree for the analysis of voltage deviations (12V monoblocs under continuous charge)



www.enersys.com

© 2024 EnerSys. All rights reserved. Unauthorised distribution prohibited. Trademarks and logos are the property of EnerSys and its affiliates except UL, CE, UKCA, and Scotch-Brite, which are not the property of EnerSys. Subject to revisions without prior notice. E.&O.E.

EMEA-EN-OM-ZR-BL-1024

