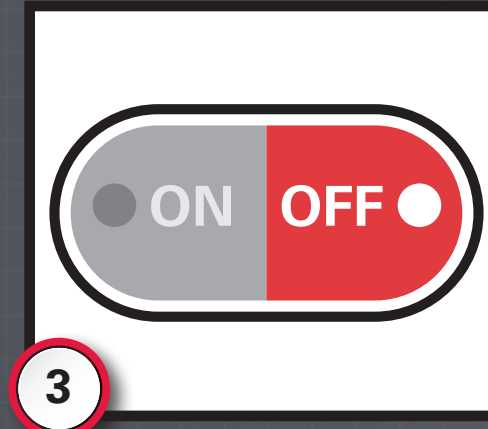


**1** Prior to connecting, ensure cables have no damage and connectors are free of contamination.



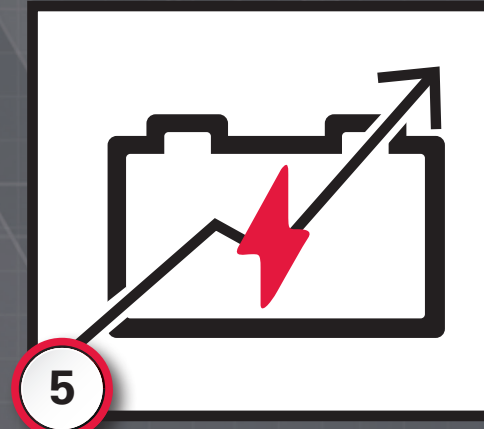
**2** Connect charger cables to battery using the dedicated battery charging connector(s). Do not charge with cable that connects battery to equipment.



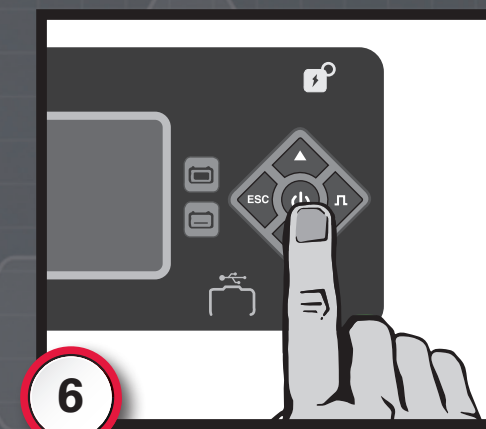
**3** After connection is complete, power to equipment will turn off, enabling driveaway protection.



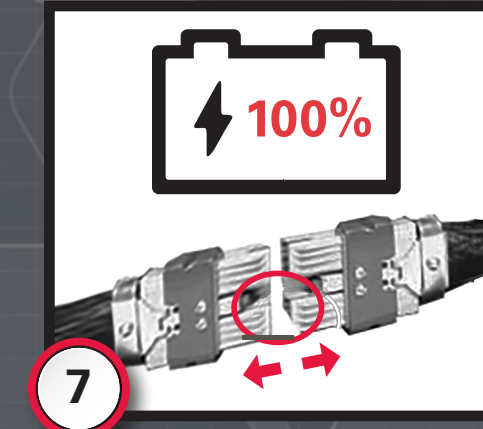
**4** If battery is OFF, the charger automatically wakes battery and initiates charge.



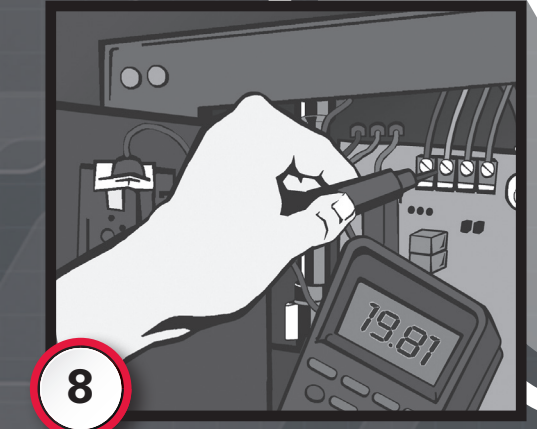
**5** Charge rates optimize automatically. Charging will stop if battery detects a fault.



**6** Press the charger's ON/OFF button before disconnecting battery from charger.

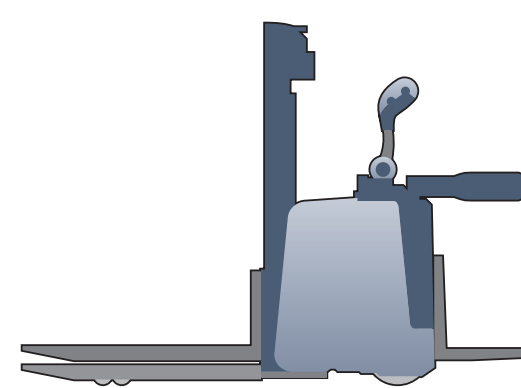
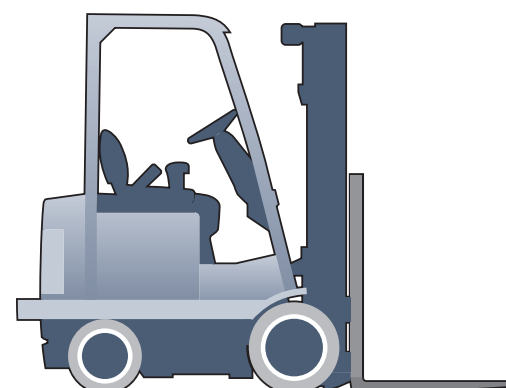


**7** Charger will indicate when full charge is achieved. Disconnect battery from the charger at this time.



**8** Only authorized representatives may service charger.

- 1** Observe all safety and OSHA regulations for industrial lithium-ion batteries. Report any damaged connectors or cables to your supervisor, as this presents an electrical hazard.
- 2** The battery will either have a SINGLE or DUAL charging cables, depending on the battery model and application charge rate.
- 3** Once a charging cable is connected, the traction contactor will open, removing power from the truck.
- 4** Charging will begin after the CAN communication has started between the battery and the charger, which occurs when the charging cable with CAN is connected.
- 5** The optimal charge current will automatically be determined based on the battery conditions (SoC, temperature, etc.) and charger conditions (temperature, charger size). The charge level will dynamically change during the charging process, ensuring fast charging and optimal lifetime of the product.



- 6** If required to stop charging prior to completing the charge, press the ON/OFF button on the charger prior to disconnecting. The battery must not be disconnected while still being charged by the charger.
- 7** At this point, the charger is no longer supplying current to the battery, and the charge plug(s) should be disconnected from the battery. The battery will then automatically open the charge path and close the traction path, supplying power to the truck.
- 8** Only authorized EnerSys® Service Representatives may service the battery and charger. **Only EnerSys-approved chargers are to be used to charge NexSys® iON batteries.**

**For detailed operating instructions and safety precautions, please refer to the manual provided with the battery or charger.**